



# Hans Rinke

---

Coastal Regional Forester

[hans.rinke@alaska.gov](mailto:hans.rinke@alaska.gov)







# Forest Practices Act

- Detailed Plans of Operation (DPO) are being received and reviewed within the region
- Working with Operators and Landowners on renewal of DPO's from previous field seasons in Region 1





## Forest Management

- Sold Bayview timber sale in late January (574 acres at 14.4mmbf)
- Demand for personal use timber and fuelwood has been consistent throughout southcentral
- Many operators in the Mat Su Valley are working on spruce beetle salvage projects on private lands





## Interagency Collaboration

- USFS--Good Neighbor Agreement timber sales (Vallenar and Kosciusko)
- ADFG--Willer Kash forest road improvements through Pittman Robertson funding
- USFS—Grant funded fuels reduction and forest health projects Western Bark Beetle, Western States Wildland Urban Interface





# Fire Management

- Consolidated dispatch strategic planning
- McGrath Area agency scoping effort underway with BLM regarding future service delivery
- Pursuing the use of daily satellite imagery through Planet
- Palmer crew facility, efforts underway in comparative analysis of potential facility location





## Staffing

- Currently the Coastal Region has 15 vacancies, including foresters, dispatchers, and initial attack firefighters. Recruitment efforts are underway to fill these positions.





# Jeremy Douse

---

Northern Region Forester  
[Jeremy.douse@alaska.gov](mailto:Jeremy.douse@alaska.gov)







# Forest Management

---

Berg Birch completed – 985 CCF (82 acres)

Seven Mile Island – 2046 CCF (88 acres)

Canyon East Mixed #2 – 867 CCF (57 acres)

Boundary Spruce – 1336 CCF (78 acres)





## Roads -Pittman Robertson

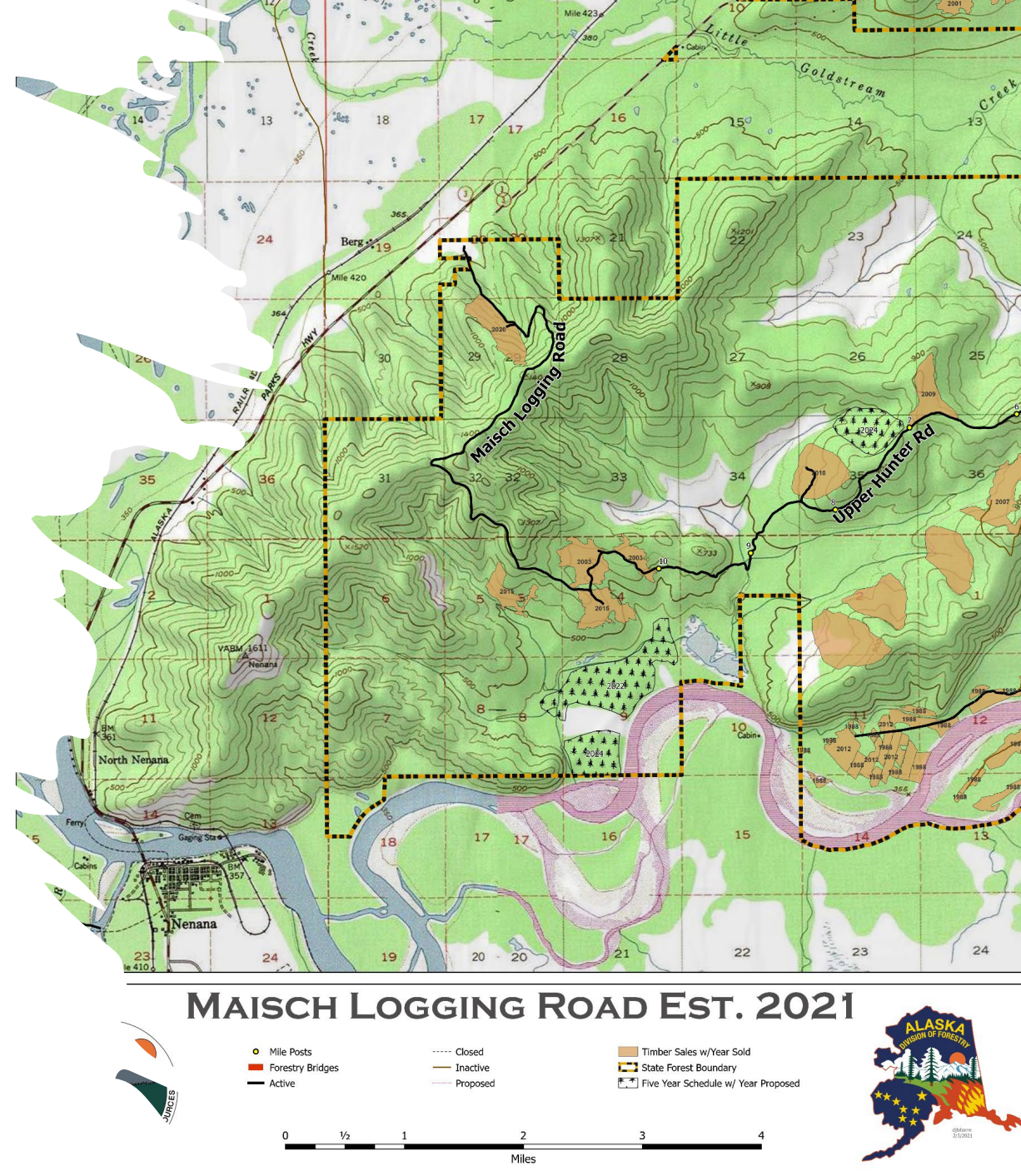
- 10 Miles of road upgrade to Cache Creek road
- Fortune Creek Bridge Replacement
- 12 Miles of road upgrade to Standard Creek road





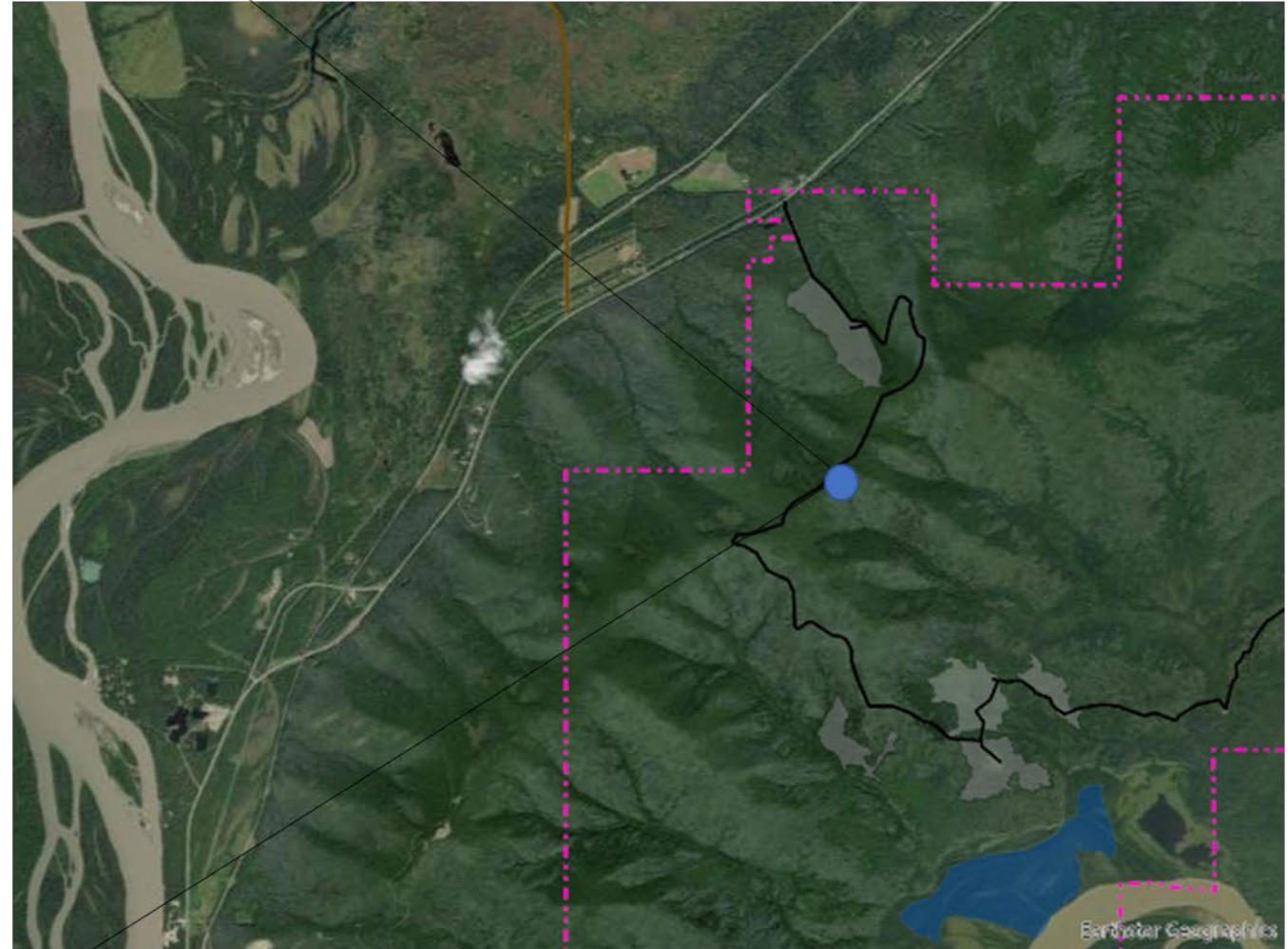
# Maisch Logging Road

- Approximately 5 miles
- 750 acres of scheduled timber sales
- Additional public access
- Personal use firewood cutting





# New Forest Road Construction





# Winter road





# Forest Inventory

- FIA – southwest unit
- McIntire Stennis Capacity Grant
  - CAFE plot remeasurement
  - Birch regeneration and site preparation





# Cooperative Agreements

- Fort Wainwright – Forestry Support
- BLM-GNA – Delta River West, Copper River CWPP







# Fire Management

---

- Consolidated Dispatch – Northern Forestry Dispatch Center
- Fuels –
  - Old Murphy Dome - maintenance
  - Delta River West – fuel break
  - Anderson - shaded
  - Vista Gold - shaded





# Staffing

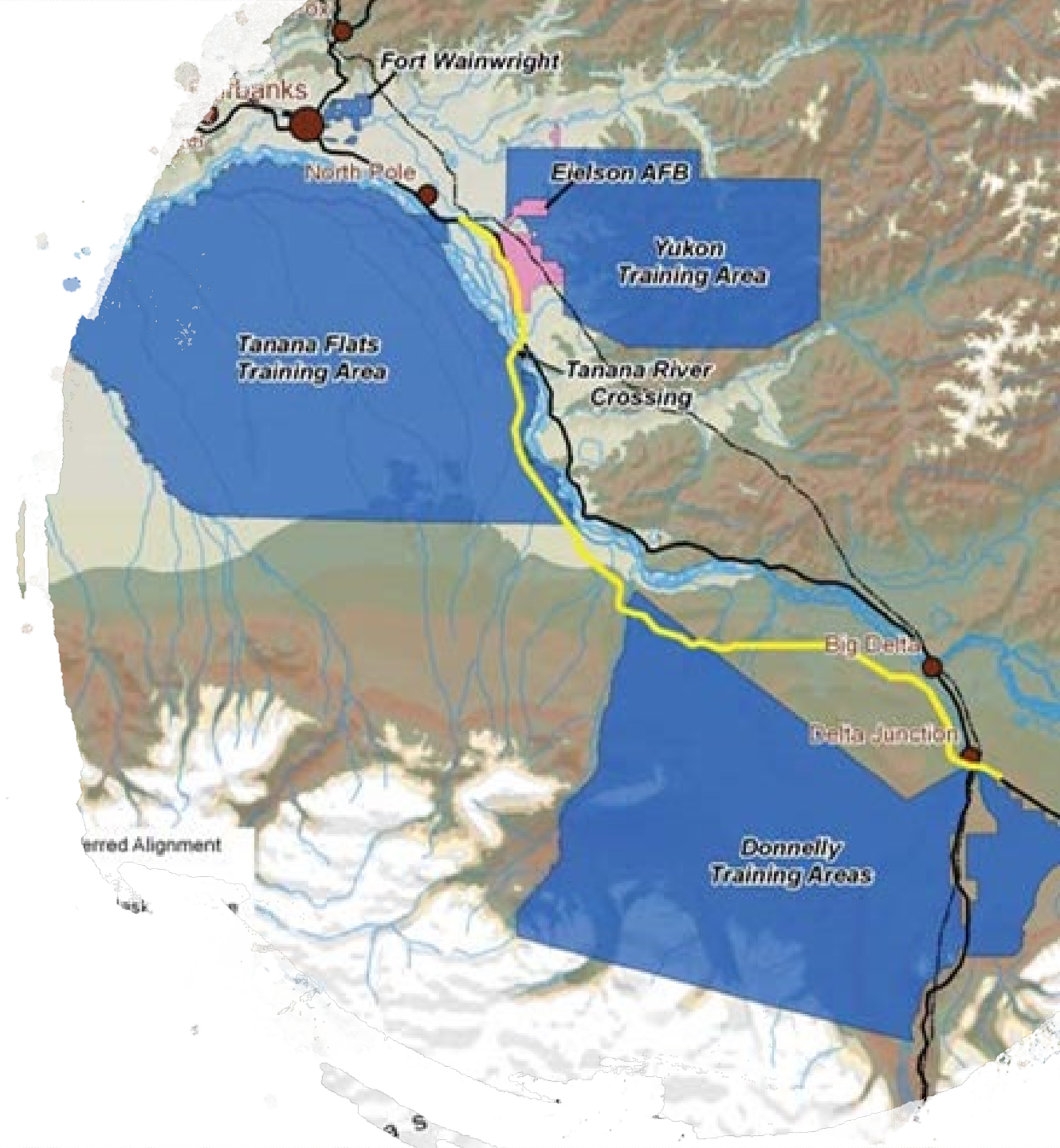
- Northern Region has 12 vacancies in IA, crew positions
  - Fairbanks FMO,
  - White Mountain Superintendent
- All forester positions are currently filled
- FIA permanent staff filled. Seasonal staff hiring.





# Northern Rail Extension 2010

- Analyzed already in an EIS
- DOF Provided comments
- Bridge across the Tanana Constructed in 2014





# Alaska To Alberta Rail

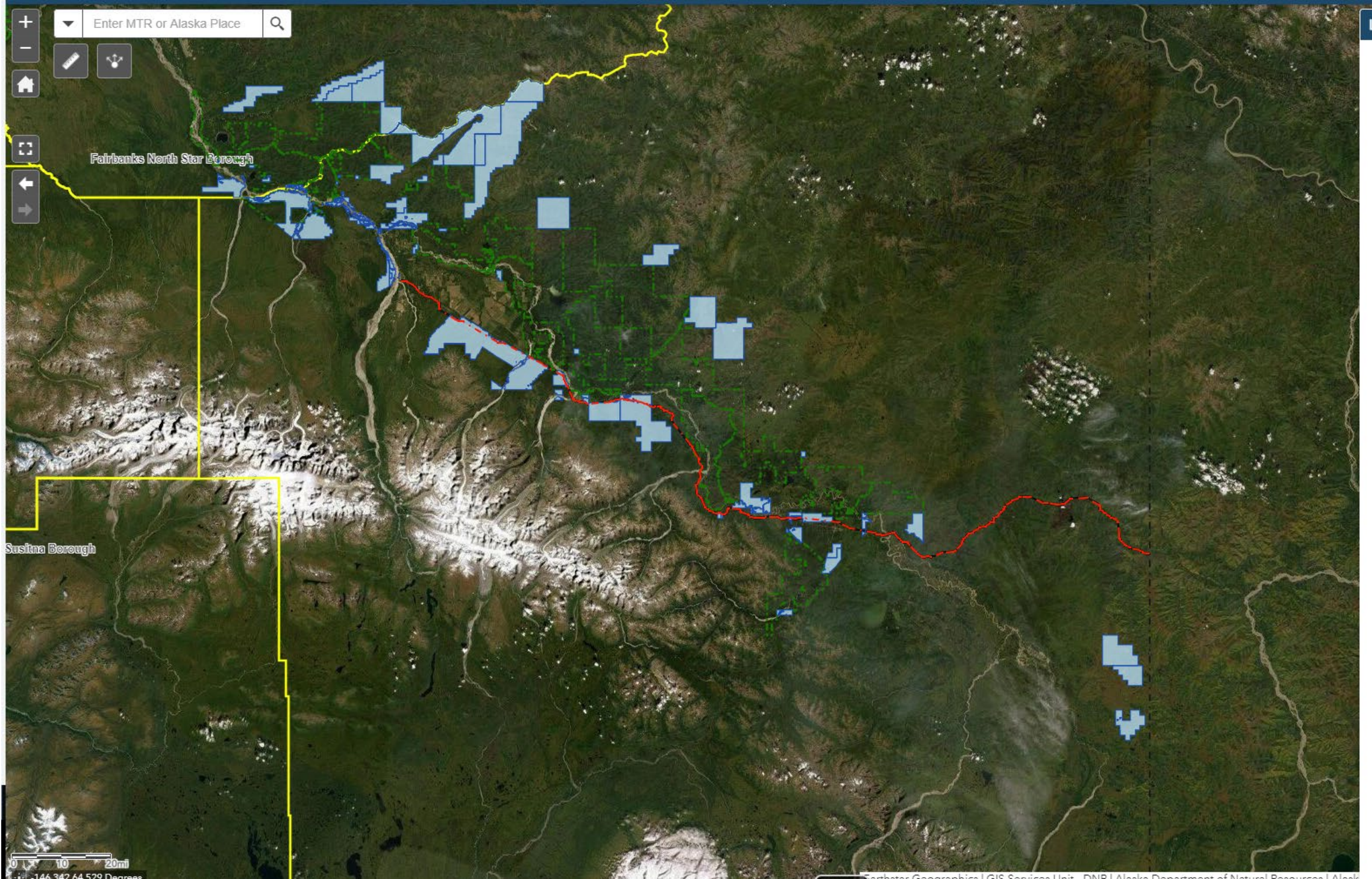
Alaska Statutes 2019

[AS 42.40.460](#)

- (c)(1) the Department of Natural Resources **shall reserve the transportation corridor** and associated rail land across state land identified by the corporation.
- (c)(3) the department and the corporation shall cooperate to identify, on a continuing basis and to the extent practicable, **the potential crossings for economic development and public access** along the land reserved for the transportation corridor and associated rail land









- grade separated crossings are preferable but expensive
- There is a stronger argument for at grade crossings if a road has a legal status, an issued easement or an RS 2477
- Reviewed 5 year schedule, inventory and topography layers to develop a rough transportation plan. Identified most likely crossing areas that would be needed in the future.
- DOF submitted 23 easement applications (10 Delta Area, 13 Tok Area)

